

STRATFORD

VICTORIA HEIGHTS



**SHOWN IN OPTIONAL
ELEVATION D**

4 Beds
2.5 Baths
2,759 Sq. Ft.



ELEVATION B



ELEVATION C

770-502-6230 | HeatherlandHomes.com



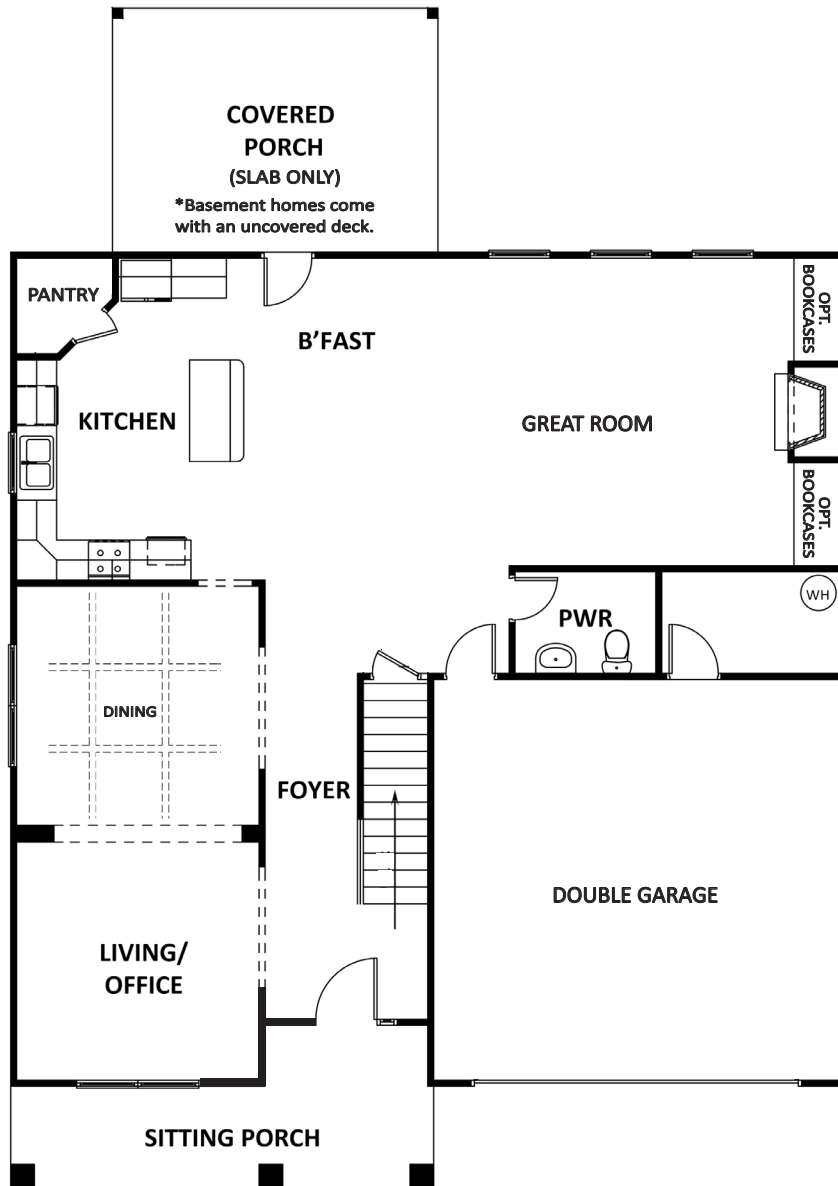
Prices, plans, elevations, square footage, specifications, materials, and included features are subject to change at any time without notice or obligation. Drawings, renderings, images, square footage, plans, elevations, features, colors and sizes are approximate and may vary from the actual homes built. © 2021 Tamra Wade Team of RE/MAX TRU (770) 502-6230. All rights reserved.

Revised 9-30-21

RE/MAX TRU
— POWERED BY —
TAMRA WADE

STRATFORD

VICTORIA HEIGHTS



FIRST FLOOR

770-502-6230 | HeatherlandHomes.com



Prices, plans, elevations, square footage, specifications, materials, and included features are subject to change at any time without notice or obligation. Drawings, renderings, images, square footage, plans, elevations, features, colors and sizes are approximate and may vary from the actual homes built. © 2021 Tamra Wade Team of RE/MAX TRU (770) 502-6230. All rights reserved.

Revised 9-30-21

STRATFORD

VICTORIA HEIGHTS



SECOND FLOOR W/ MEDIA OPTION

770-502-6230 | HeatherlandHomes.com



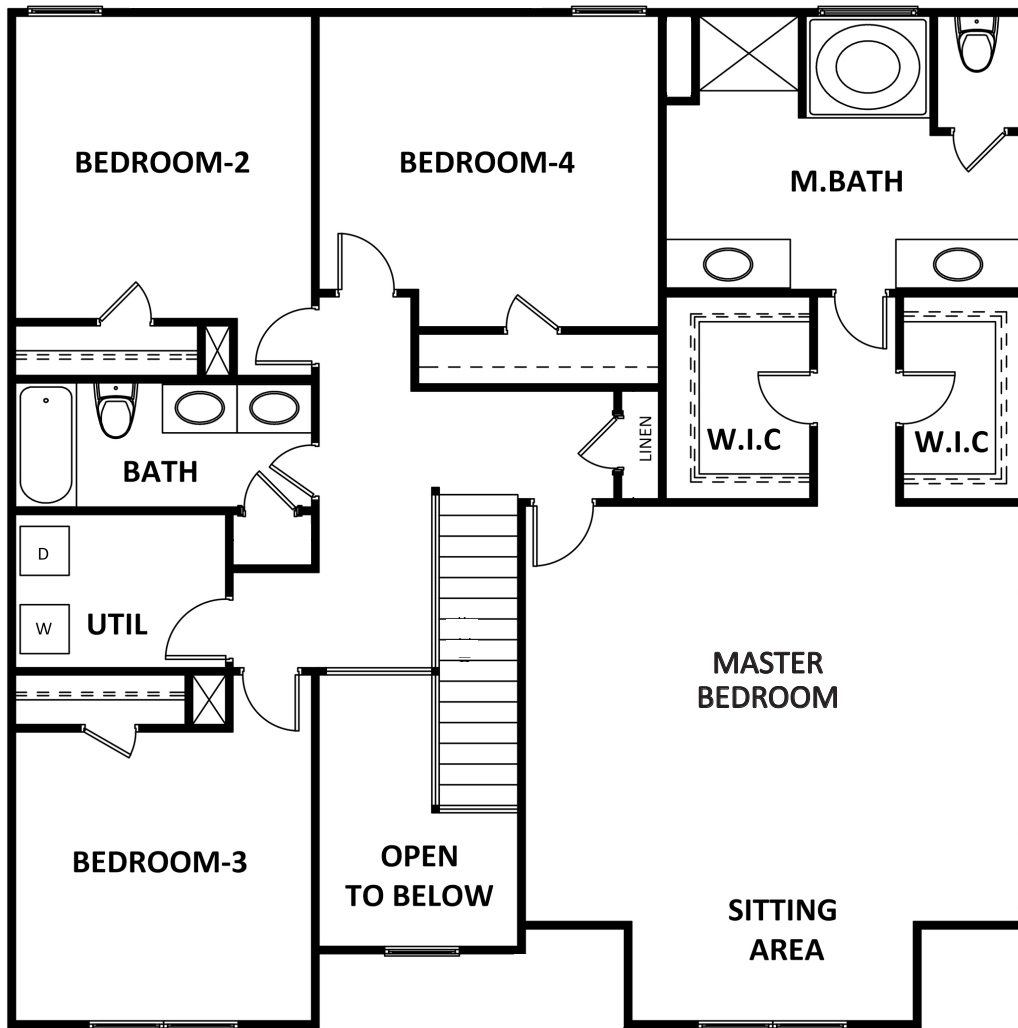
Prices, plans, elevations, square footage, specifications, materials, and included features are subject to change at any time without notice or obligation. Drawings, renderings, images, square footage, plans, elevations, features, colors and sizes are approximate and may vary from the actual homes built. © 2021 Tamra Wade Team of RE/MAX TRU (770) 502-6230. All rights reserved.

Revised 9-30-21

RE/MAX TRU
— POWERED BY —
TAMRA WADE

STRATFORD

VICTORIA HEIGHTS



SECOND FLOOR

770-502-6230 | HeatherlandHomes.com



Prices, plans, elevations, square footage, specifications, materials, and included features are subject to change at any time without notice or obligation. Drawings, renderings, images, square footage, plans, elevations, features, colors and sizes are approximate and may vary from the actual homes built. © 2021 Tamra Wade Team of RE/MAX TRU (770) 502-6230. All rights reserved.

Revised 9-30-21

RE/MAX TRU
— POWERED BY —
TAMRA WADE