



SHOWN IN OPTIONAL ELEVATION A

4 BEDROOMS
3 FULL BATHS
1 HALF BATHS
2,683 SQ FT
BASEMENT

Lakewood

MARVELLE | FLOORPLAN



770-502-6230 | HeatherlandHomes.com



Prices, plans, elevations, square footage, specifications, materials, and included features are subject to change at any time without notice or obligation. Drawings, renderings, images, square footage, plans, elevations, features, colors and sizes are approximate and may vary from the actual homes built. © 2020 Tamra Wade Team of RE/MAX TRU (770) 502-6230. All rights reserved.

Revised 3-21-22

RE/MAX TRU
— POWERED BY —
TAMRA WADE



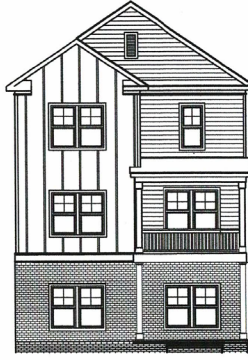
Heatherland
Homes

Lakewood

MARVELLE | FLOORPLAN



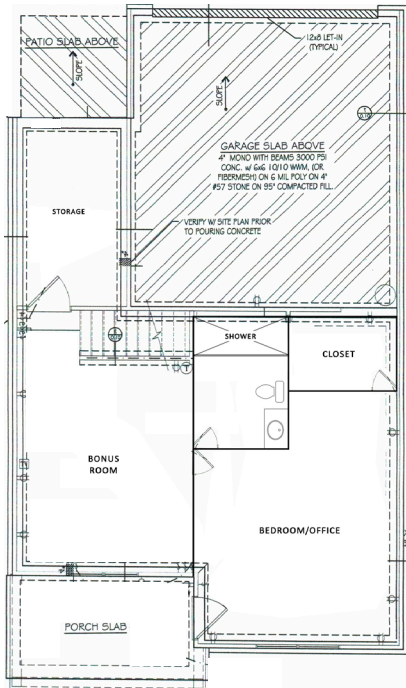
Elevation A



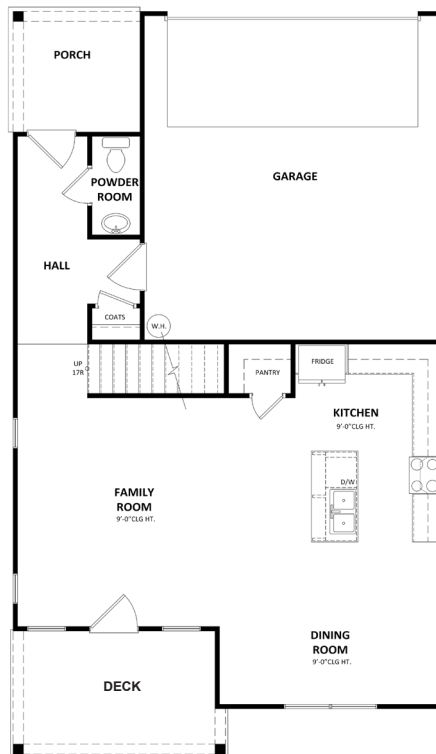
Elevation B



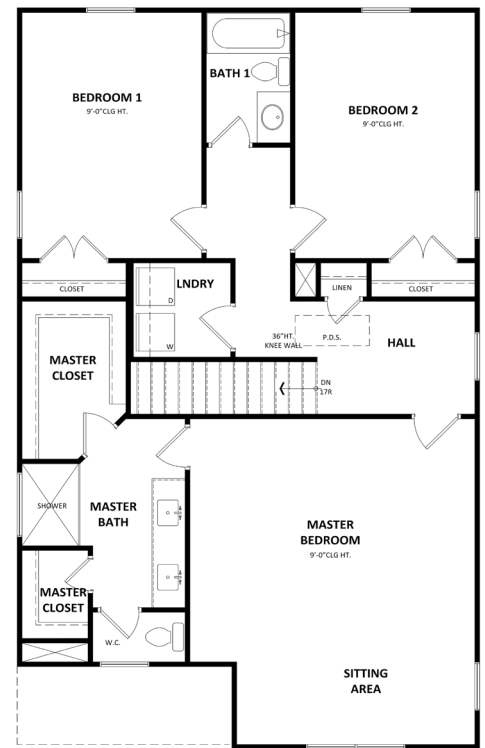
Elevation C



Basement



First Floor



Second Floor

FOR MORE OPTIONS, CONTACT THE SALES MANAGERS

770-502-6230 | HeatherlandHomes.com



2020 COMMUNITY
OF THE YEAR



Prices, plans, elevations, square footage, specifications, materials, and included features are subject to change at any time without notice or obligation. Drawings, renderings, images, square footage, plans, elevations, features, colors and sizes are approximate and may vary from the actual homes built. © 2020 Tamra Wade Team of RE/MAX TRU (770) 502-6230. All rights reserved.

Revised 3-21-22

RE/MAX TRU
— POWERED BY —
TAMRA WADE