



SHOWN IN OPTIONAL ELEVATION A

3 BEDROOM
2.5 BATHROOM
2,364 SQ FT

Alia

MARVELLE | FLOORPLAN



Prices, plans, elevations, square footage, specifications, materials, and included features are subject to change at any time without notice or obligation. Drawings, renderings, images, square footage, plans, elevations, features, colors and sizes are approximate and may vary from the actual homes built. © 2020 Tamra Wade Team of RE/MAX TRU (770) 502-6230. All rights reserved.

Revised 11-1-20

RE/MAX TRU
— POWERED BY —
TAMRA WADE

Sales Center: 770•502•6230 | HeatherlandHomes.com



**2020 COMMUNITY
OF THE YEAR**



Elevation A



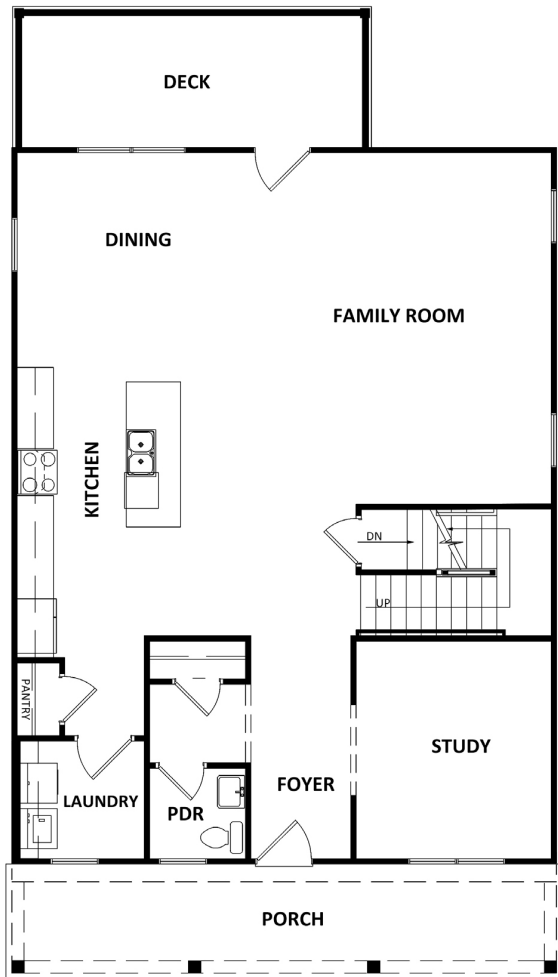
Elevation B



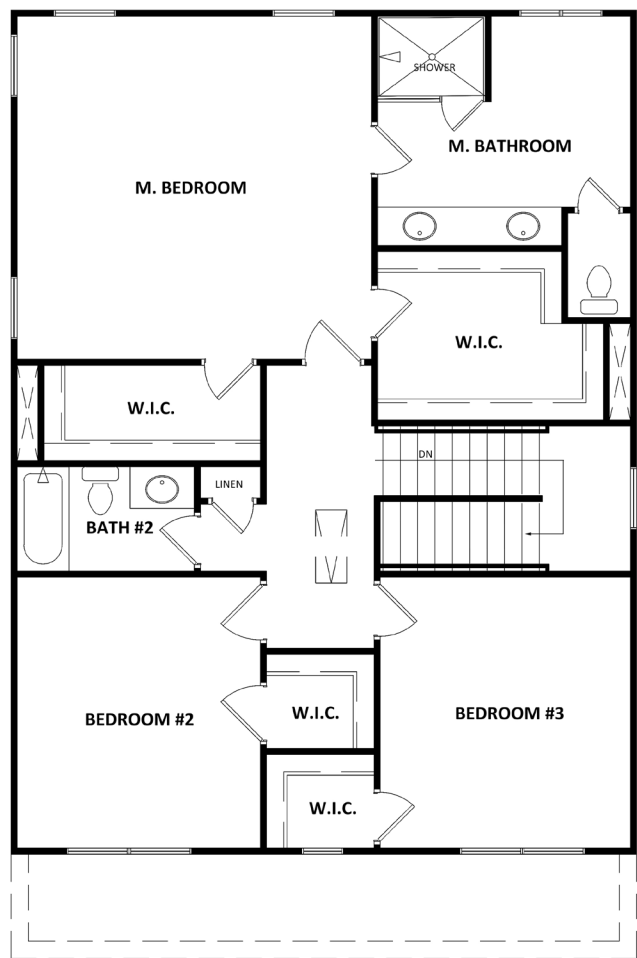
Elevation C



Elevation D



First Floor



Second Floor



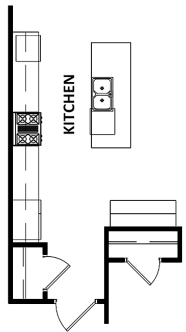
Prices, plans, elevations, square footage, specifications, materials, and included features are subject to change at any time without notice or obligation. Drawings, renderings, images, square footage, plans, elevations, features, colors and sizes are approximate and may vary from the actual homes built. © 2020 Tamra Wade Team of RE/MAX TRU (770) 502-6230. All rights reserved.

Revised 11-1-20

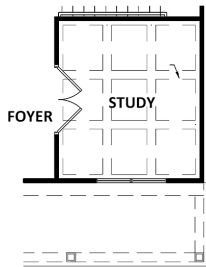
RE/MAX TRU
— POWERED BY —
TAMRA WADE



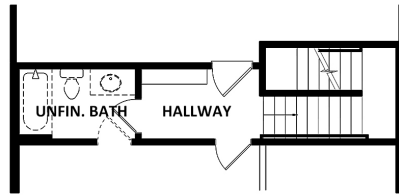
**2020 COMMUNITY
OF THE YEAR**



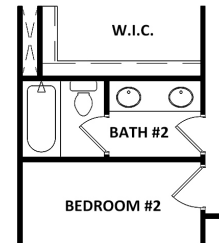
Split Cooking
Kitchen



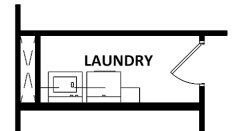
Opt. Coffe
CLG.



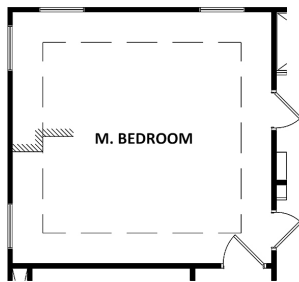
Opt. Bench
with Hooks



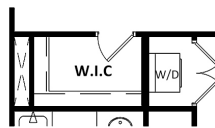
Opt. DBL. Sinks
in Bath #2



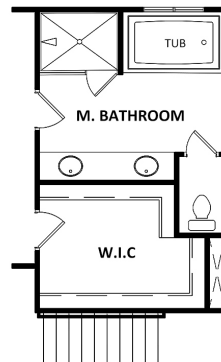
Opt. Laundry



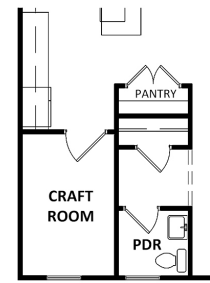
Opt. Tray
Ceiling



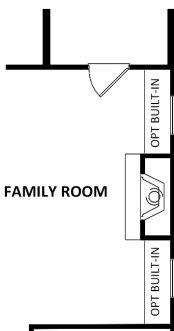
Opt. Stackable
Washer and
Dryer



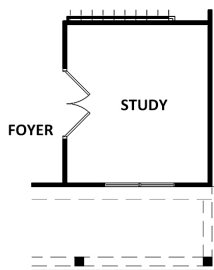
Master Bath
Tub With Opt.
Tub Deck



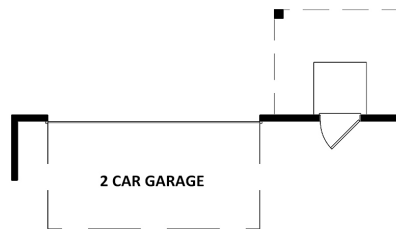
Opt. Craft
Room



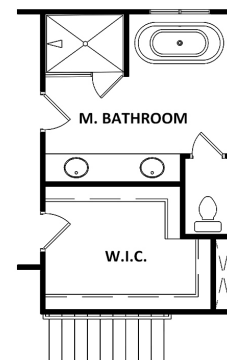
Opt. Fireplace



Opt. French
Door



Opt. Rear Entry
Door



Master Bath Tub With
Opt. Free Standing
Tub



Prices, plans, elevations, square footage, specifications, materials, and included features are subject to change at any time without notice or obligation. Drawings, renderings, images, square footage, plans, elevations, features, colors and sizes are approximate and may vary from the actual homes built. © 2020 Tamra Wade Team of RE/MAX TRU (770) 502-6230. All rights reserved.

Revised 11-1-20

RE/MAX TRU
POWERED BY
TAMRA WADE



2020 COMMUNITY
OF THE YEAR