

# COBALT

MIRROR LAKE - SOUTH HARBOUR



6 Beds | 4 Baths | 3,654 Sq. Ft.

770-502-6230 | [HeatherlandHomes.com](https://HeatherlandHomes.com)



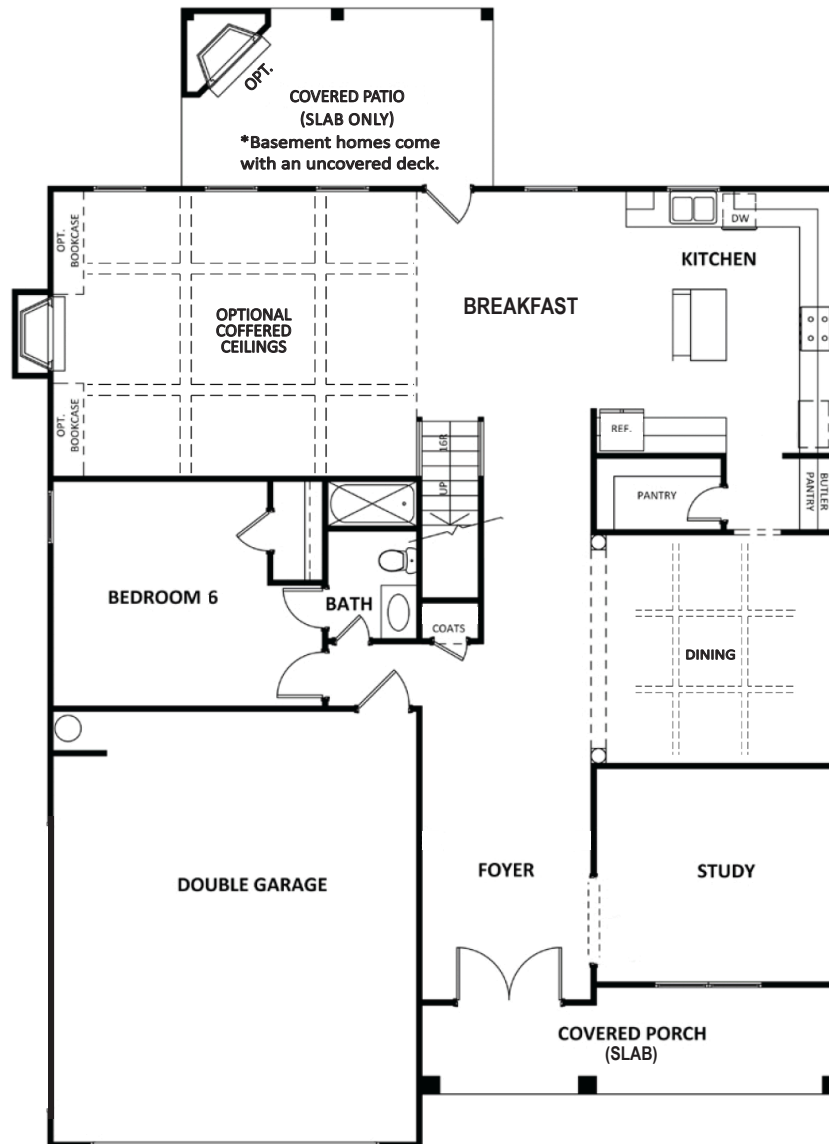
Prices, plans, elevations, square footage, specifications, materials, and included features are subject to change at any time without notice or obligation. Drawings, renderings, images, square footage, plans, elevations, features, colors and sizes are approximate and may vary from the actual homes built. © 2021 Tamra Wade Team of RE/MAX TRU (770) 502-6230. All rights reserved.

**Revised 12-15-21**

**RE/MAX<sup>®</sup> TRU**  
— POWERED BY —  
**TAMRA WADE**

# COBALT

MIRROR LAKE - SOUTH HARBOUR



## FIRST FLOOR

770-502-6230 | HeatherlandHomes.com



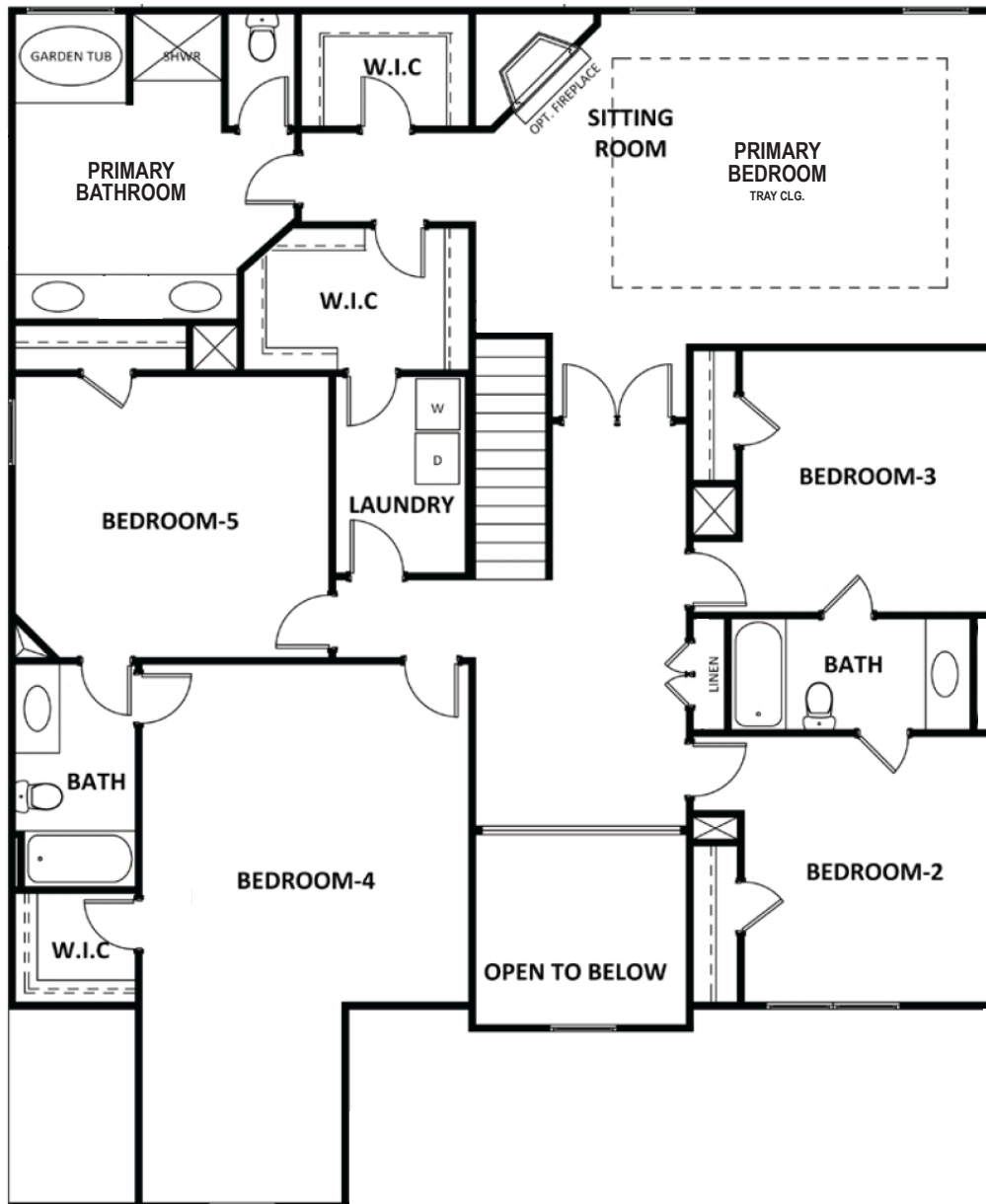
Prices, plans, elevations, square footage, specifications, materials, and included features are subject to change at any time without notice or obligation. Drawings, renderings, images, square footage, plans, elevations, features, colors and sizes are approximate and may vary from the actual homes built. © 2021 Tamra Wade Team of RE/MAX TRU (770) 502-6230. All rights reserved.

Revised 12-15-21

**RE/MAX**   
— POWERED BY —  
**TAMRA WADE**

# COBALT

MIRROR LAKE - SOUTH HARBOUR



## SECOND FLOOR

770-502-6230 | HeatherlandHomes.com



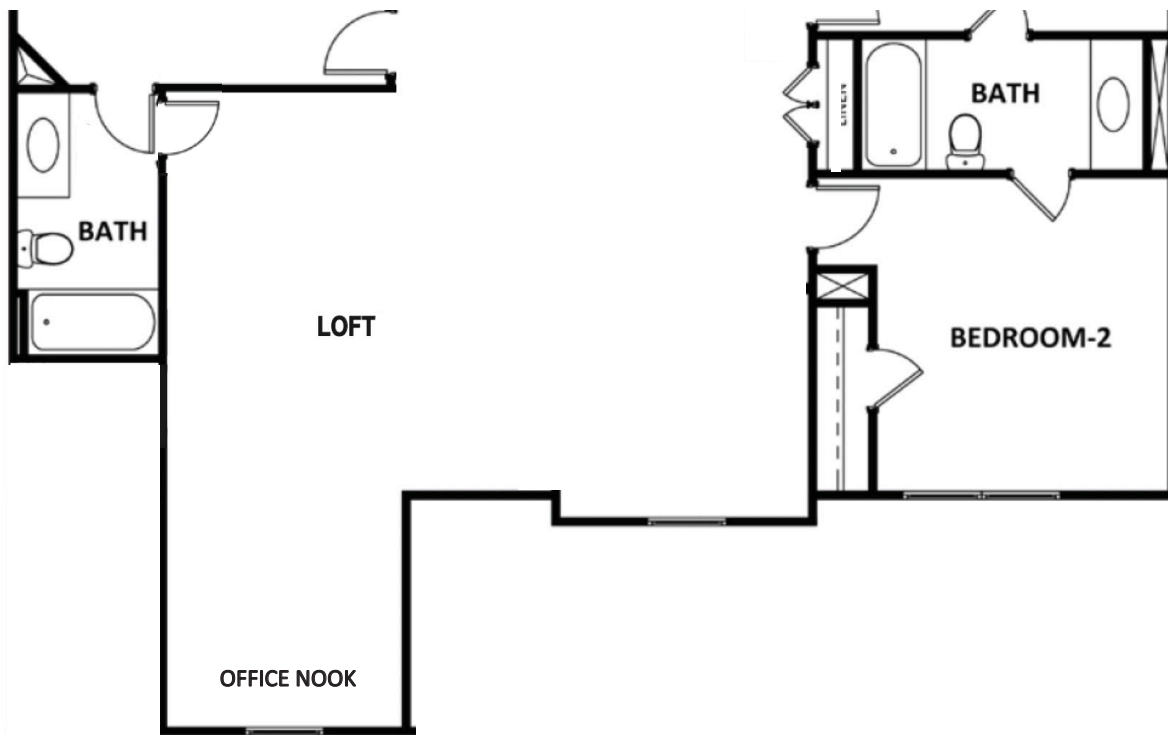
Prices, plans, elevations, square footage, specifications, materials, and included features are subject to change at any time without notice or obligation. Drawings, renderings, images, square footage, plans, elevations, features, colors and sizes are approximate and may vary from the actual homes built. © 2021 Tamra Wade Team of RE/MAX TRU (770) 502-6230. All rights reserved.

Revised 12-15-21

**RE/MAX**   
— POWERED BY —  
**TAMRA WADE**

# COBALT

MIRROR LAKE - SOUTH HARBOUR



## OPTIONAL LOFT

770-502-6230 | [HeatherlandHomes.com](http://HeatherlandHomes.com)



Prices, plans, elevations, square footage, specifications, materials, and included features are subject to change at any time without notice or obligation. Drawings, renderings, images, square footage, plans, elevations, features, colors and sizes are approximate and may vary from the actual homes built. © 2021 Tamra Wade Team of RE/MAX TRU (770) 502-6230. All rights reserved.

Revised 12-15-21

**RE/MAX**   
— POWERED BY —  
**TAMRA WADE**