



4 BEDROOM
3 BATHROOM
2,091 SQ FT

Kensington

FLOORPLAN



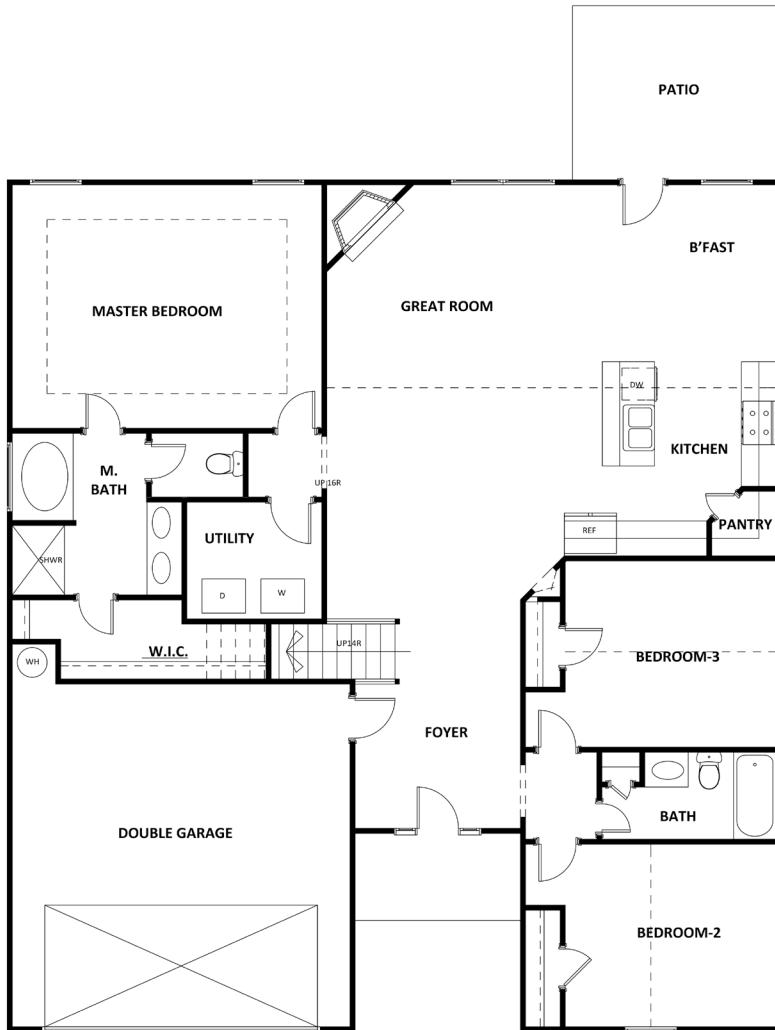
Prices, plans, elevations, square footage, specifications, materials, and included features are subject to change at any time without notice or obligation. Drawings, renderings, images, square footage, plans, elevations, features, colors and sizes are approximate and may vary from the actual homes built. © 2019 Tamra Wade Team of RE/MAX TRU (770) 502-6232. All rights reserved.

Revised 6-4-19

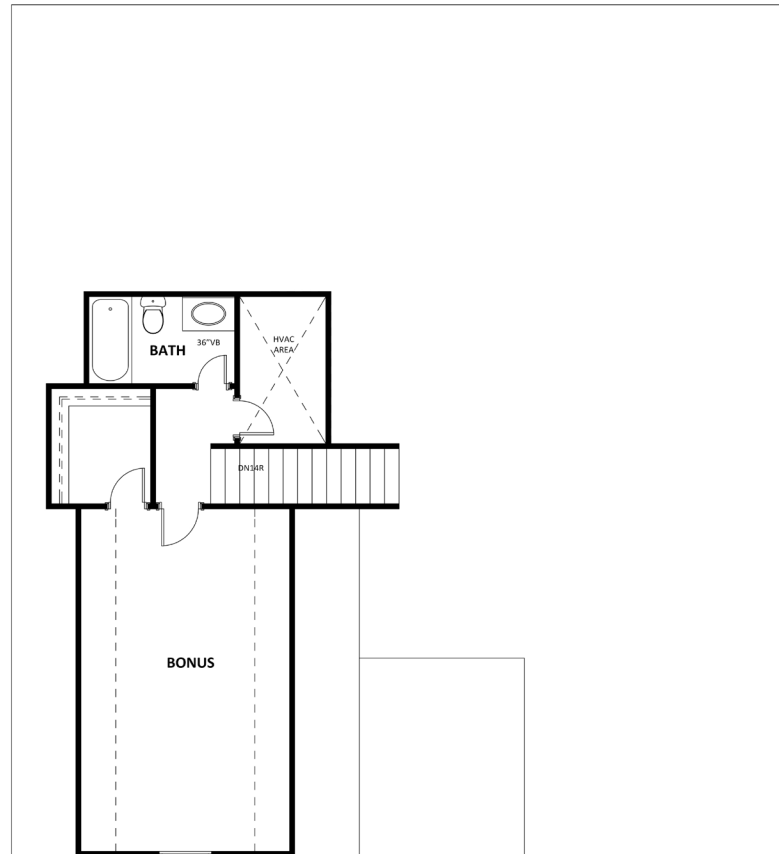
RE/MAX TRU

TAMRA WADE
TEAM

Sales Center: 770-502-6230 | HeatherlandHomes.com



Main Floor



Bonus



Prices, plans, elevations, square footage, specifications, materials, and included features are subject to change at any time without notice or obligation. Drawings, renderings, images, square footage, plans, elevations, features, colors and sizes are approximate and may vary from the actual homes built. © 2019 Tamra Wade Team of RE/MAX TRU (770) 502-6232. All rights reserved.

Revised 6-4-19

