



## SHOWN IN OPTIONAL ELEVATION A

5 BEDROOM  
4 BATHROOM  
3,466 SQ FT

# Cooper

OVERLOOK AT HILLTOP | FLOORPLAN

\*3<sup>RD</sup> FLOOR OPTION IS ONLY AVAILABLE ON A SLAB HOMESITE



Prices, plans, elevations, square footage, specifications, materials, and included features are subject to change at any time without notice or obligation. Drawings, renderings, images, square footage, plans, elevations, features, colors and sizes are approximate and may vary from the actual homes built. Drawings are artist interpretation © 2019 Tamra Wade Team of RE/MAX TRU (770) 502-6232. All rights reserved.

Revised 2-22-21

RE/MAX TRU

TAMRA WADE  
TEAM

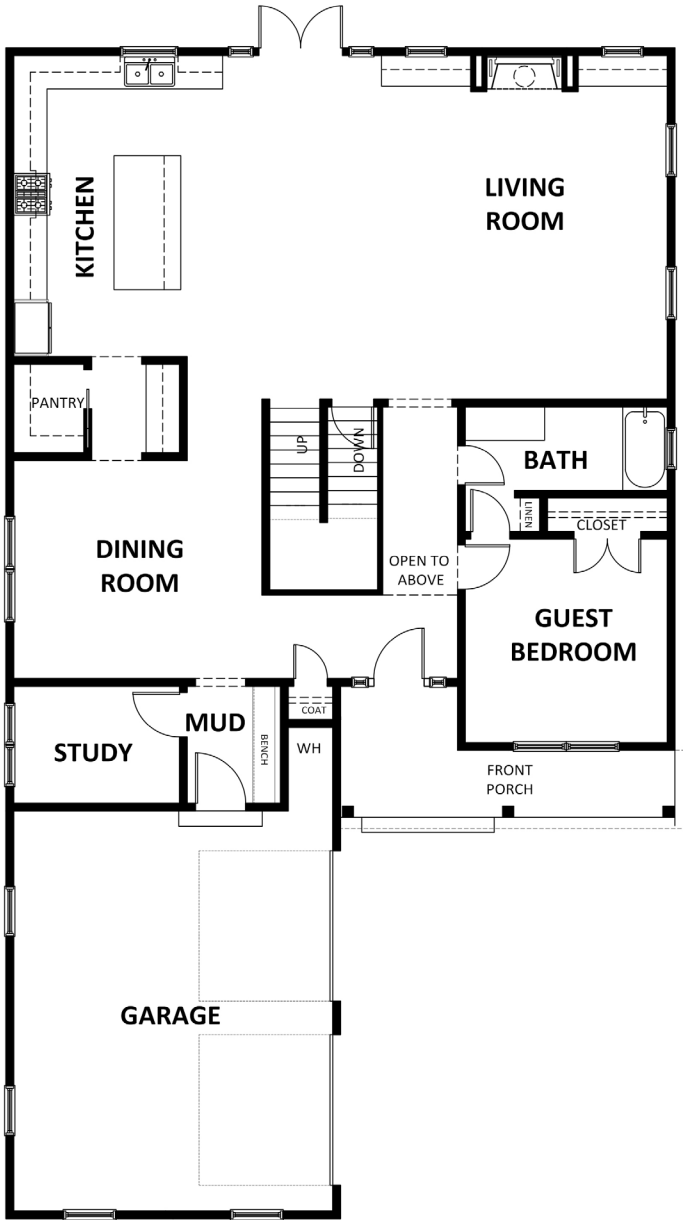
Sales Center: 770.502.6230 | HeatherlandHomes.com



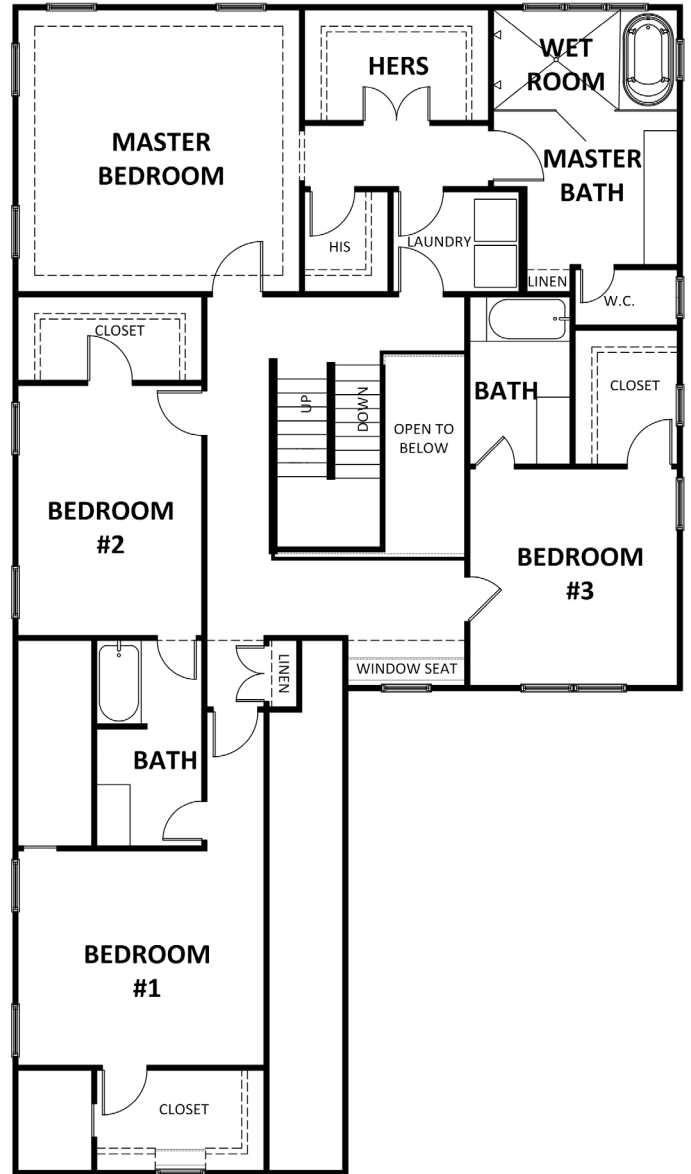
**Heatherland  
Homes**

# Cooper

OVERLOOK AT HILLTOP | FLOORPLAN



First Floor



Second Floor

\*3<sup>RD</sup> FLOOR OPTION IS ONLY AVAILABLE ON A SLAB HOMESITE



Prices, plans, elevations, square footage, specifications, materials, and included features are subject to change at any time without notice or obligation. Drawings, renderings, images, square footage, plans, elevations, features, colors and sizes are approximate and may vary from the actual homes built. Drawings are artist interpretation © 2019 Tamra Wade Team of RE/MAX TRU (770) 502-6232. All rights reserved.

Revised 2-22-21

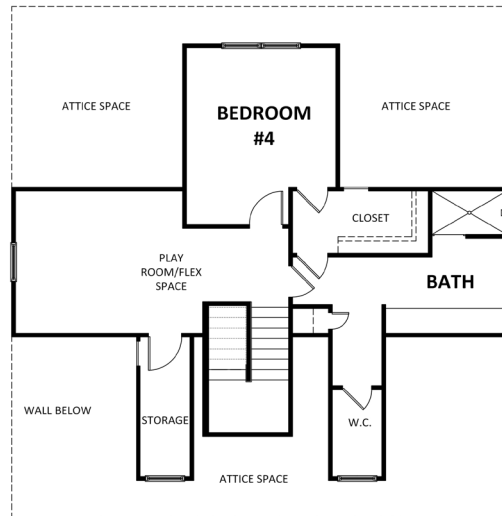




Heatherland  
Homes

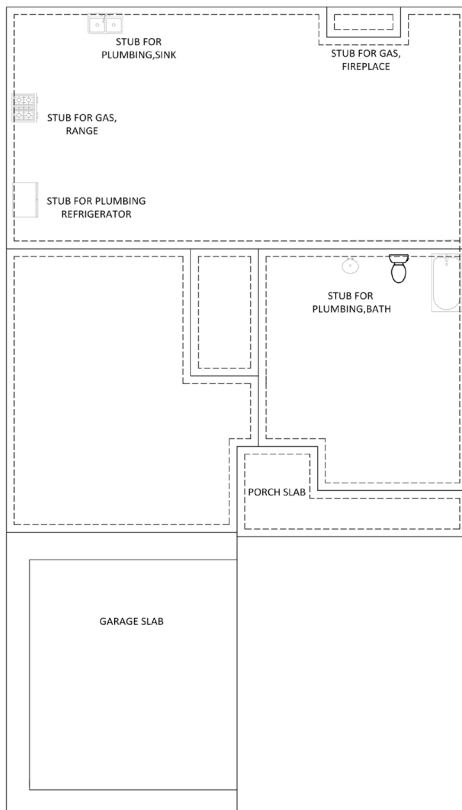
# Cooper

OVERLOOK AT HILLTOP | FLOORPLAN

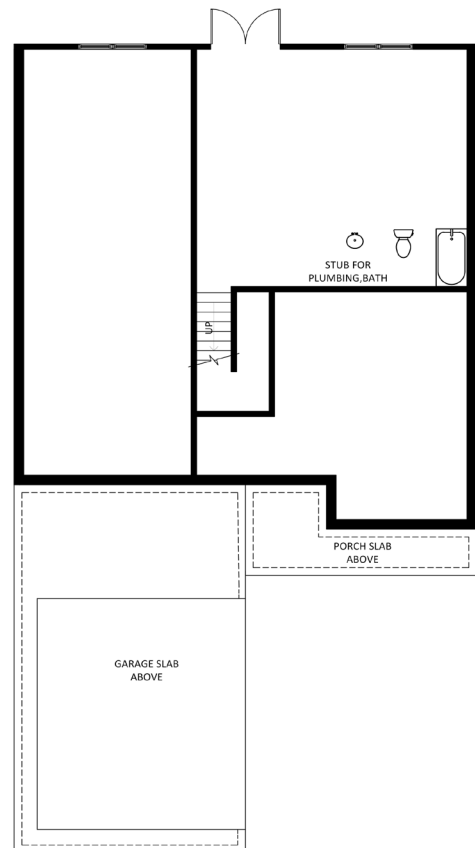


\*3<sup>RD</sup> FLOOR OPTION IS ONLY AVAILABLE ON A SLAB HOMESITE

Third Floor



Slab Floor Plan



Basement Floor Plan



Prices, plans, elevations, square footage, specifications, materials, and included features are subject to change at any time without notice or obligation. Drawings, renderings, images, square footage, plans, elevations, features, colors and sizes are approximate and may vary from the actual homes built. Drawings are artist interpretation © 2019 Tamra Wade Team of RE/MAX TRU (770) 502-6232. All rights reserved.

Revised 2-22-21

RE/MAX TRU

TAMRA WADE  
TEAM