

---

# SADIE

HERON BAY



4 Beds | 3.5 Baths | 3,060 Sq. Ft.

---

770-502-6230 | [HeatherlandHomes.com](https://www.HeatherlandHomes.com)



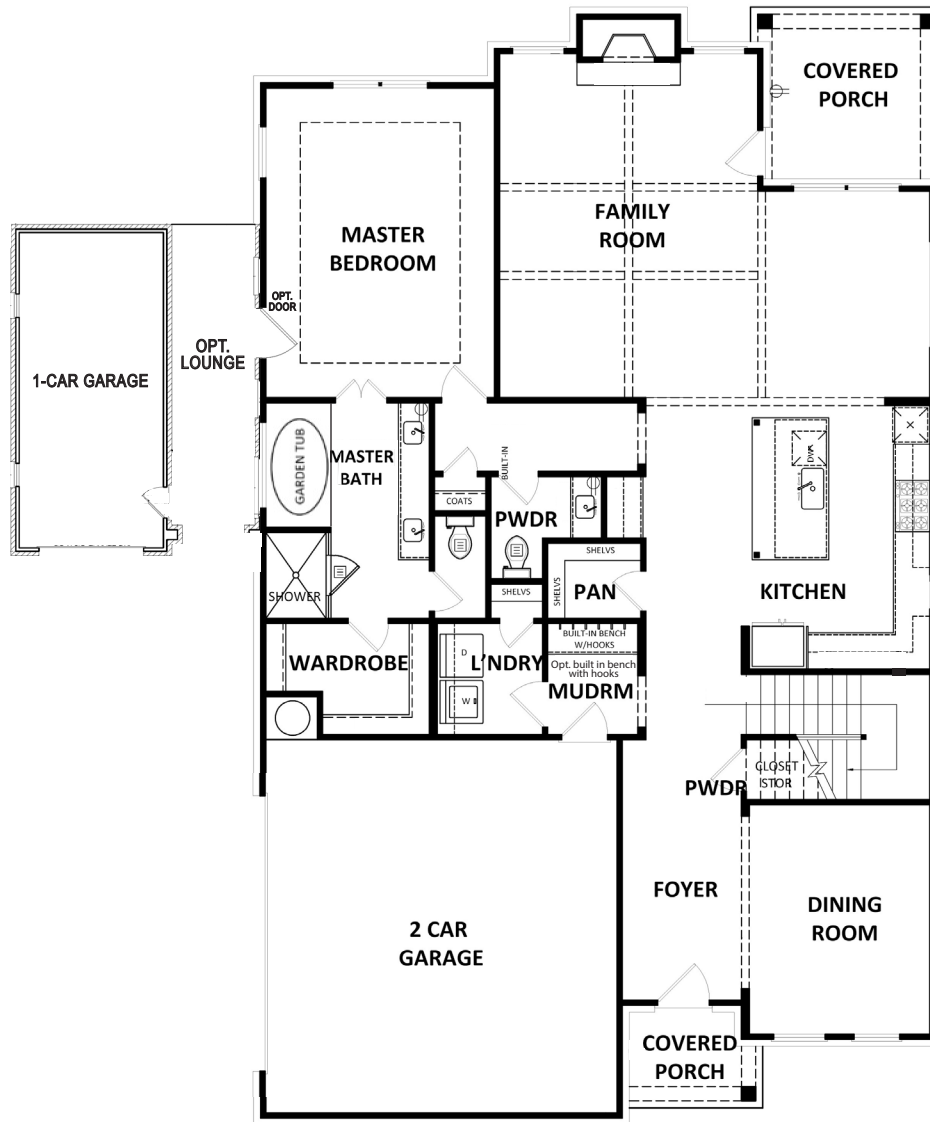
Prices, plans, elevations, square footage, specifications, materials, and included features are subject to change at any time without notice or obligation. Drawings, renderings, images, square footage, plans, elevations, features, colors and sizes are approximate and may vary from the actual homes built. © 2021 Tamra Wade Team of RE/MAX TRU (770) 502-6230. All rights reserved.

Revised 2-19-21

**RE/MAX** TRU  
— POWERED BY —  
**TAMRA WADE**

# SADIE

HERON BAY



## FIRST FLOOR

770-502-6230 | HeatherlandHomes.com



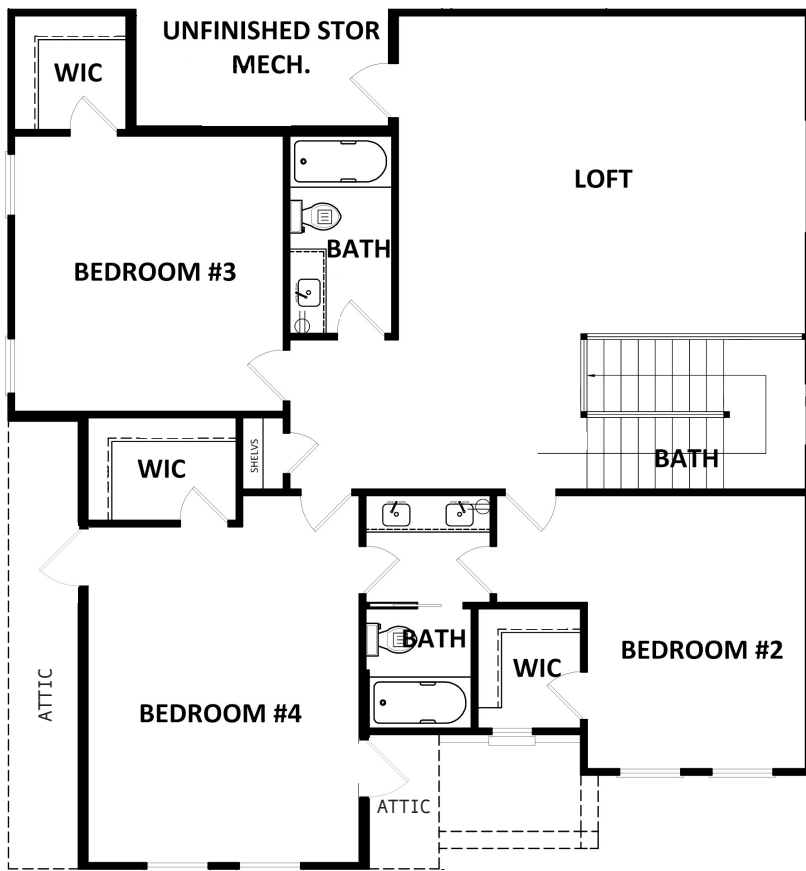
Prices, plans, elevations, square footage, specifications, materials, and included features are subject to change at any time without notice or obligation. Drawings, renderings, images, square footage, plans, elevations, features, colors and sizes are approximate and may vary from the actual homes built. © 2021 Tamra Wade Team of RE/MAX TRU (770) 502-6230. All rights reserved.

Revised 2-19-21

**RE/MAX** TRU  
POWERED BY  
TAMRA WADE

# SADIE

HERON BAY



SECOND FLOOR



OPT. BEDROOM #5

770-502-6230 | HeatherlandHomes.com



Prices, plans, elevations, square footage, specifications, materials, and included features are subject to change at any time without notice or obligation. Drawings, renderings, images, square footage, plans, elevations, features, colors and sizes are approximate and may vary from the actual homes built. © 2021 Tamra Wade Team of RE/MAX TRU (770) 502-6230. All rights reserved.

Revised 2-19-21