

MARSHALL

HERON BAY



5 Beds | 3.5 Baths | 4,000 Sq. Ft.

770-502-6230 | [HeatherlandHomes.com](https://www.HeatherlandHomes.com)



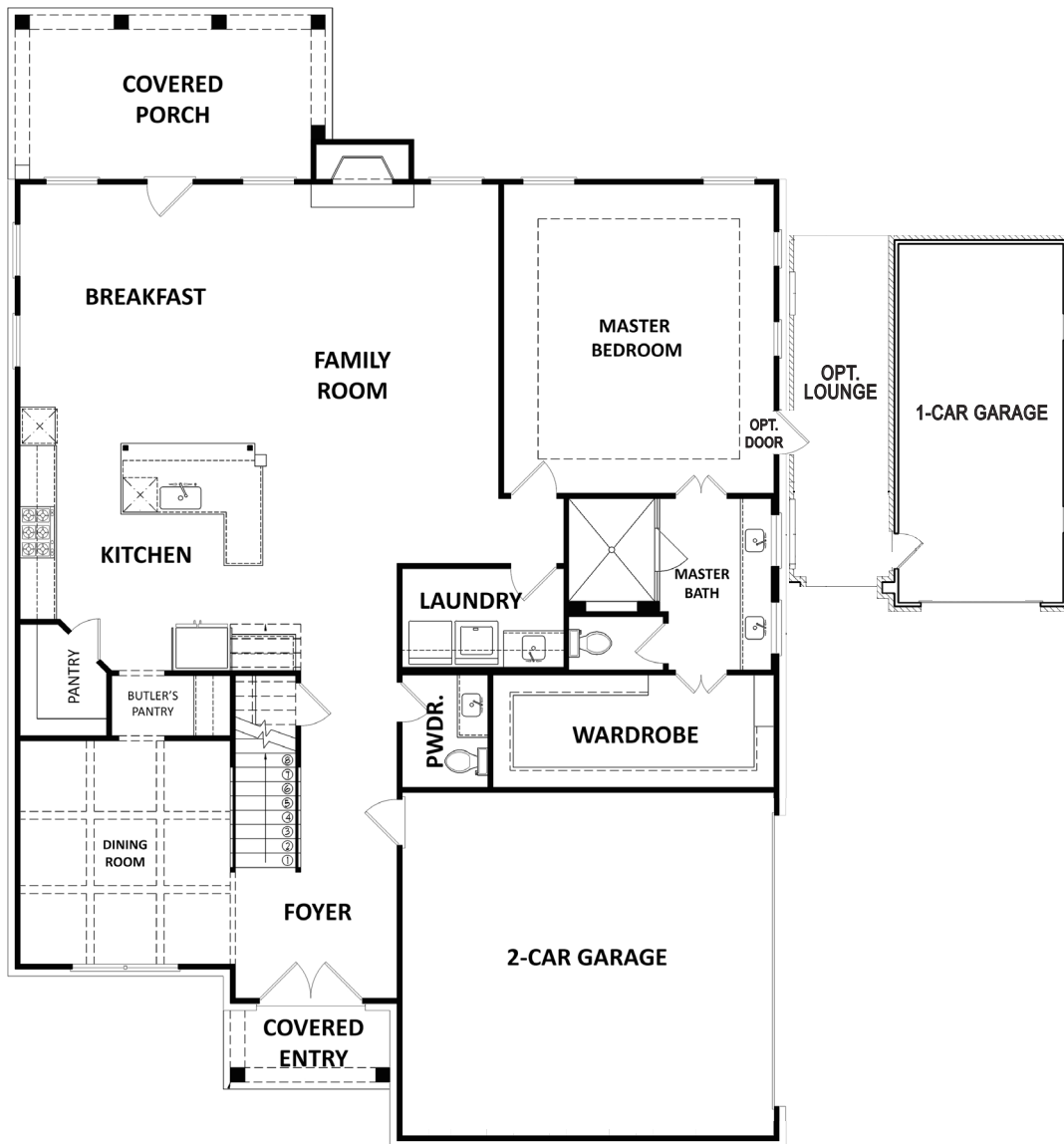
Prices, plans, elevations, square footage, specifications, materials, and included features are subject to change at any time without notice or obligation. Drawings, renderings, images, square footage, plans, elevations, features, colors and sizes are approximate and may vary from the actual homes built. © 2021 Tamra Wade Team of RE/MAX TRU (770) 502-6230. All rights reserved.

Revised 2-19-21

RE/MAX TRU
— POWERED BY —
TAMRA WADE

MARSHALL

HERON BAY



FIRST FLOOR

770-502-6230 | HeatherlandHomes.com



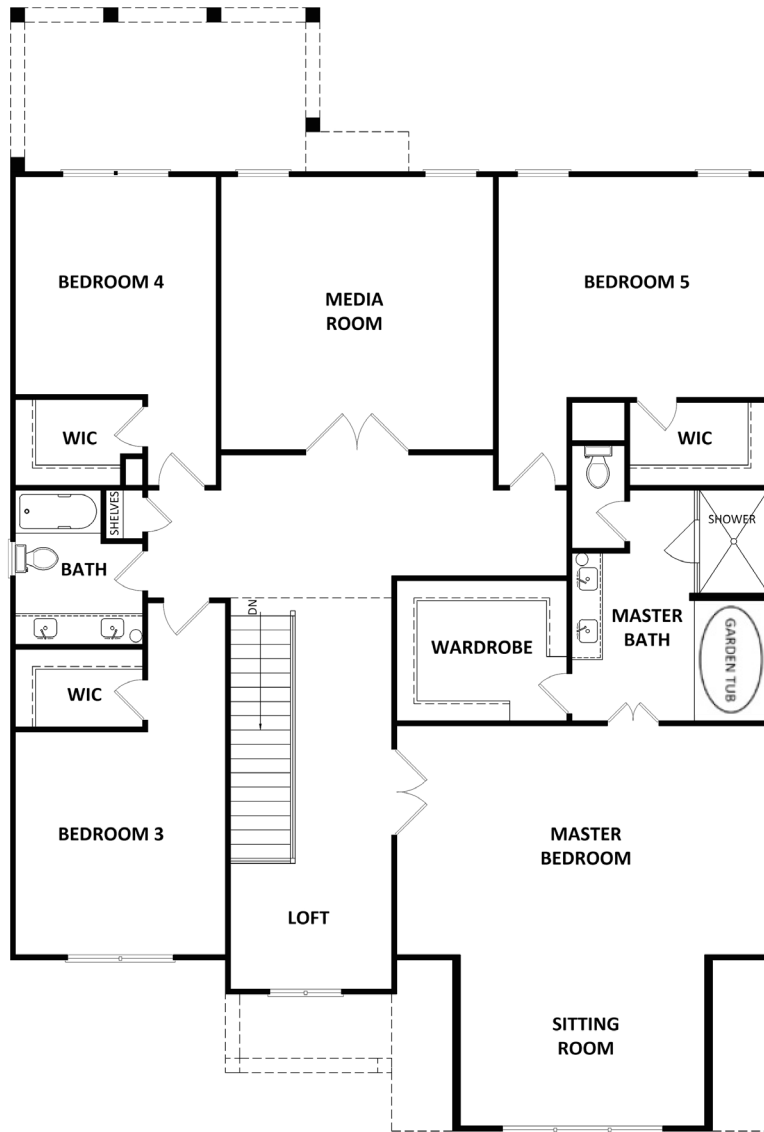
Prices, plans, elevations, square footage, specifications, materials, and included features are subject to change at any time without notice or obligation. Drawings, renderings, images, square footage, plans, elevations, features, colors and sizes are approximate and may vary from the actual homes built. © 2021 Tamra Wade Team of RE/MAX TRU (770) 502-6230. All rights reserved.

Revised 2-19-21

RE/MAX TRU
POWERED BY
TAMRA WADE

MARSHALL

HERON BAY



SECOND FLOOR

770-502-6230 | HeatherlandHomes.com

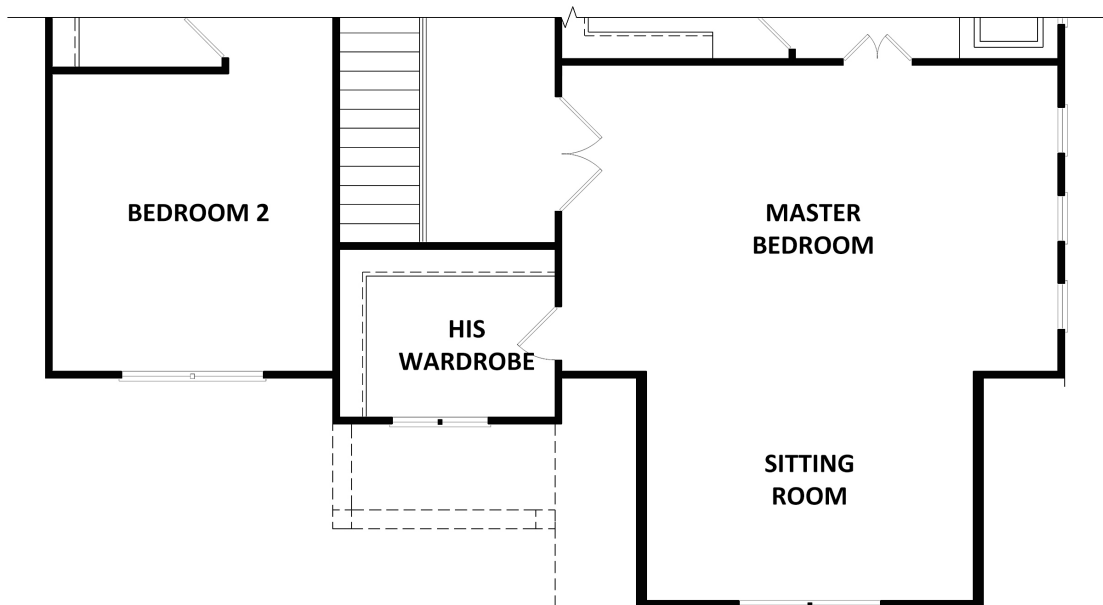


Prices, plans, elevations, square footage, specifications, materials, and included features are subject to change at any time without notice or obligation. Drawings, renderings, images, square footage, plans, elevations, features, colors and sizes are approximate and may vary from the actual homes built. © 2021 Tamra Wade Team of RE/MAX TRU (770) 502-6230. All rights reserved.

Revised 2-19-21

MARSHALL

HERON BAY



SECOND FLOOR PLAN W/ OPT. 2ND CLOSET

770-502-6230 | HeatherlandHomes.com



Prices, plans, elevations, square footage, specifications, materials, and included features are subject to change at any time without notice or obligation. Drawings, renderings, images, square footage, plans, elevations, features, colors and sizes are approximate and may vary from the actual homes built. © 2021 Tamra Wade Team of RE/MAX TRU (770) 502-6230. All rights reserved.

Revised 2-19-21

RE/MAX TRU
— POWERED BY —
TAMRA WADE