



SHOWN IN ELEVATION E

5 BEDROOM
3.5 BATHROOM
4,000 SQ FT

Marshall

HERON BAY | FLOORPLAN



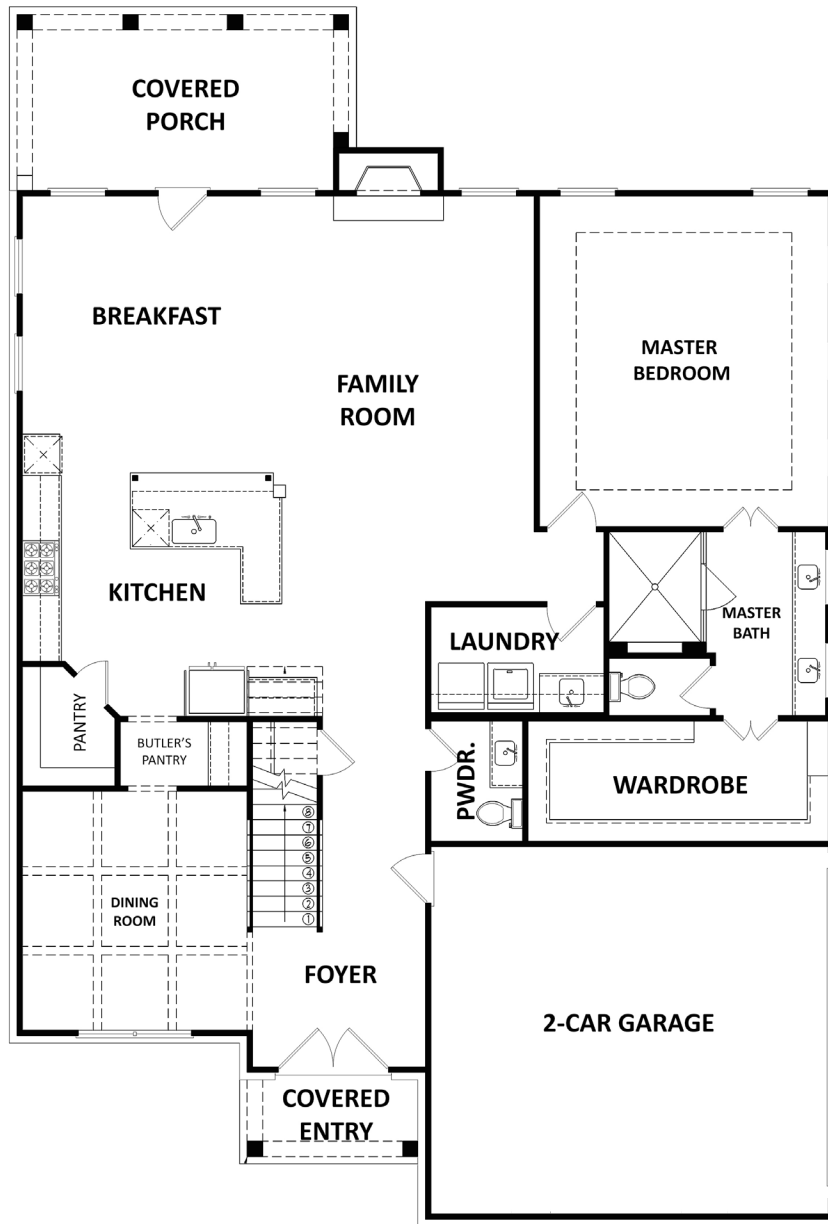
Prices, plans, elevations, square footage, specifications, materials, and included features are subject to change at any time without notice or obligation. Drawings, renderings, images, square footage, plans, elevations, features, colors and sizes are approximate and may vary from the actual homes built. Drawings are artist interpretation © 2020 Tamra Wade Team of RE/MAX TRU. All rights reserved.

Revised 11-25-20

RE/MAX TRU

TAMRA WADE
TEAM

Sales Center: 770.502.6230 | HeatherlandHomes.com



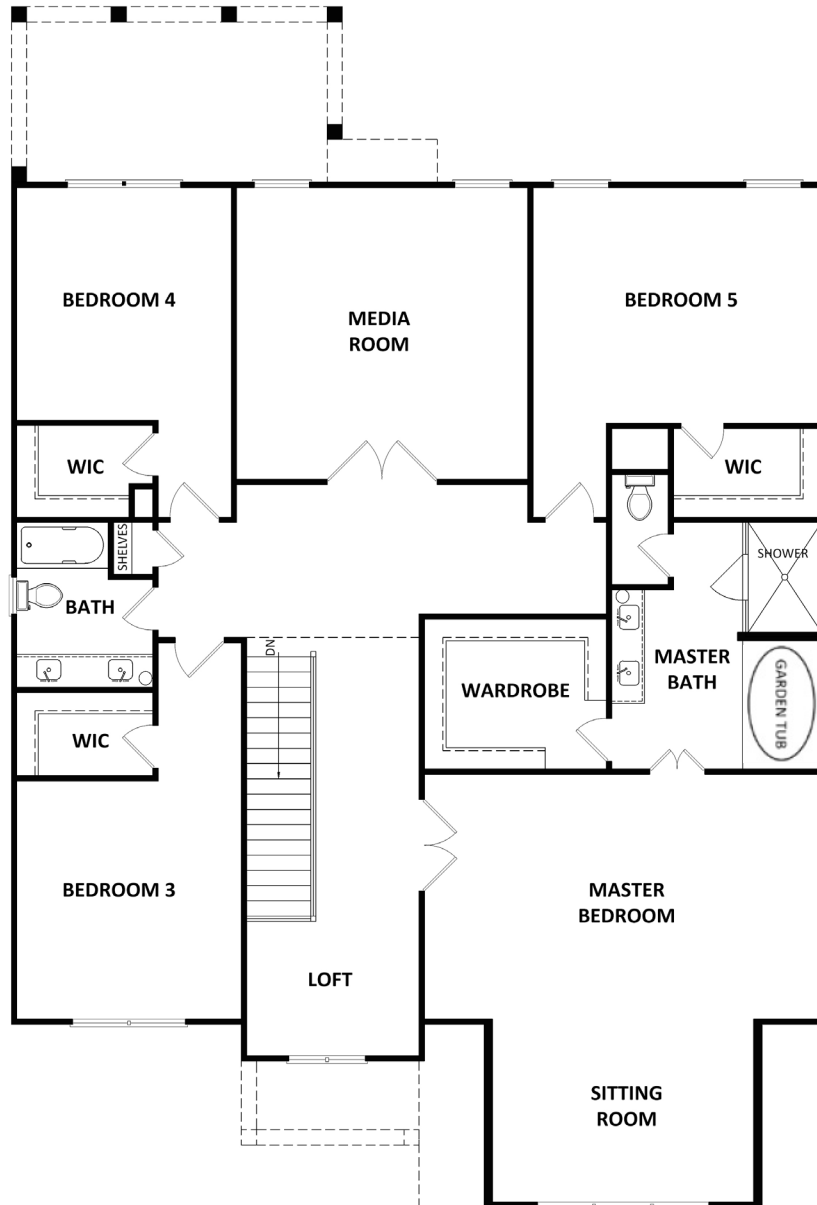
First Floor



Prices, plans, elevations, square footage, specifications, materials, and included features are subject to change at any time without notice or obligation. Drawings, renderings, images, square footage, plans, elevations, features, colors and sizes are approximate and may vary from the actual homes built. Drawings are artist interpretation © 2020 Tamra Wade Team of RE/MAX TRU. All rights reserved.

Revised 11-25-20





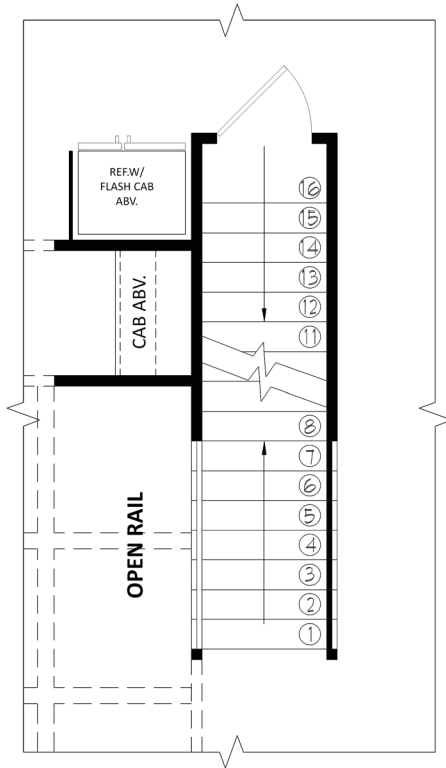
Second Floor



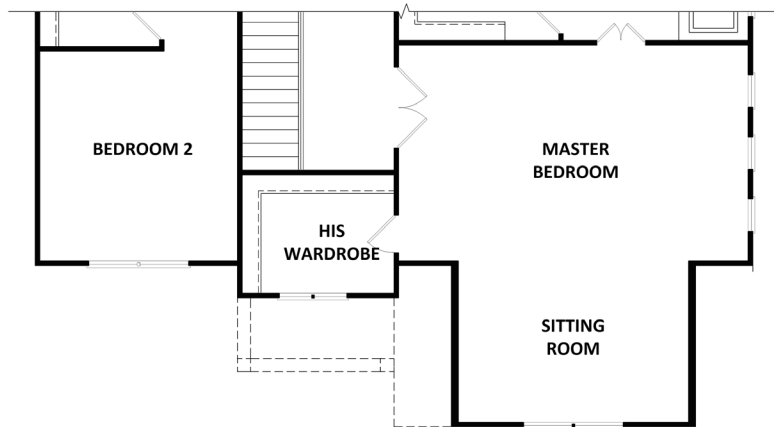
Prices, plans, elevations, square footage, specifications, materials, and included features are subject to change at any time without notice or obligation. Drawings, renderings, images, square footage, plans, elevations, features, colors and sizes are approximate and may vary from the actual homes built. Drawings are artist interpretation © 2020 Tamra Wade Team of RE/MAX TRU. All rights reserved.

Revised 11-25-20





First Floor Plan w/ Opt. Basement



Second Floor Plan w/ Opt. 2nd Closet



Prices, plans, elevations, square footage, specifications, materials, and included features are subject to change at any time without notice or obligation. Drawings, renderings, images, square footage, plans, elevations, features, colors and sizes are approximate and may vary from the actual homes built. Drawings are artist interpretation © 2020 Tamra Wade Team of RE/MAX TRU. All rights reserved.

Revised 11-25-20

