

BARRINGTON

HERON BAY



5 Beds | 4.5 Baths | 4,500 Sq. Ft.

SHOWN WITH OPT. BREEZEWAY

770-502-6230 | HeatherlandHomes.com



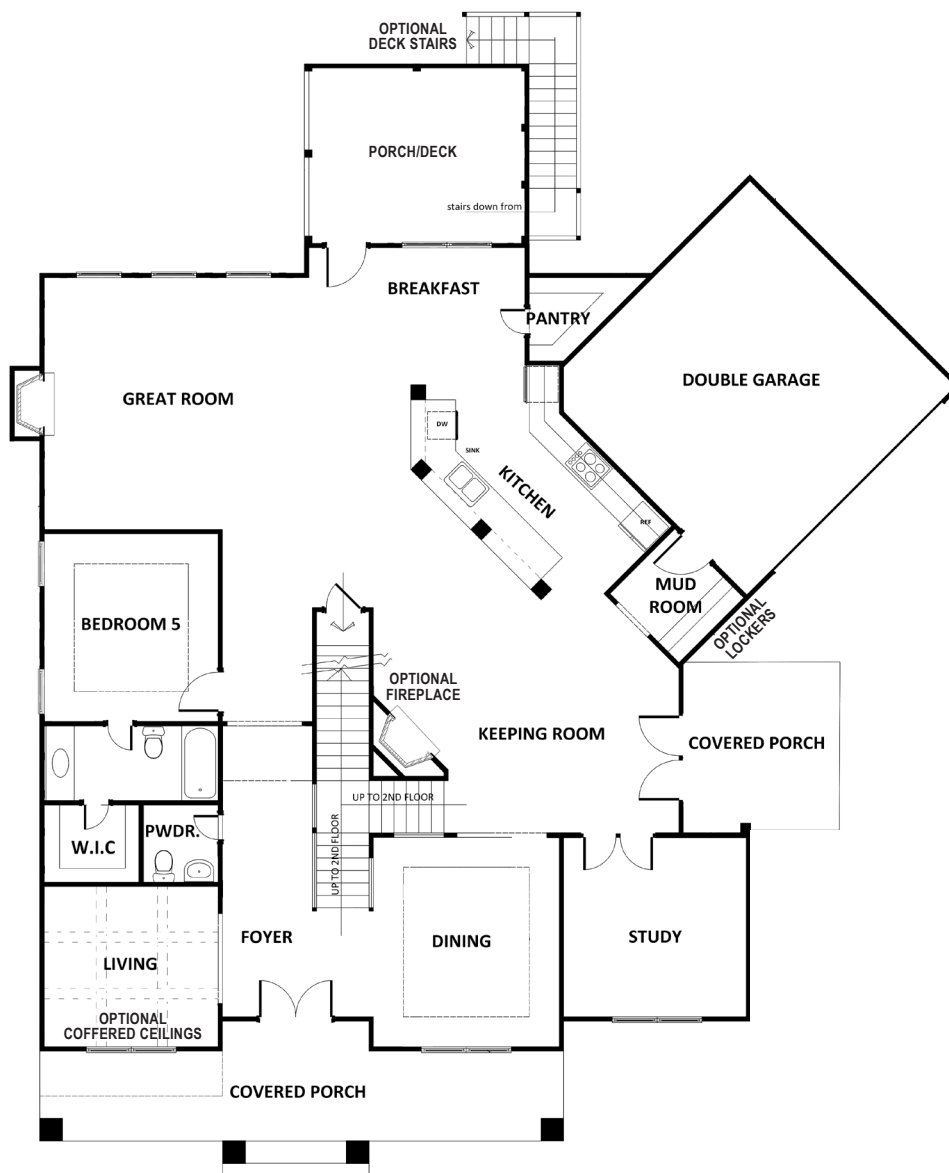
Prices, plans, elevations, square footage, specifications, materials, and included features are subject to change at any time without notice or obligation. Drawings, renderings, images, square footage, plans, elevations, features, colors and sizes are approximate and may vary from the actual homes built. © 2021 Tamra Wade Team of RE/MAX TRU (770) 502-6230. All rights reserved.

Revised 12-3-21

RE/MAX 
— POWERED BY —
TAMRA WADE

BARRINGTON

HERON BAY



FIRST FLOOR

770-502-6230 | HeatherlandHomes.com



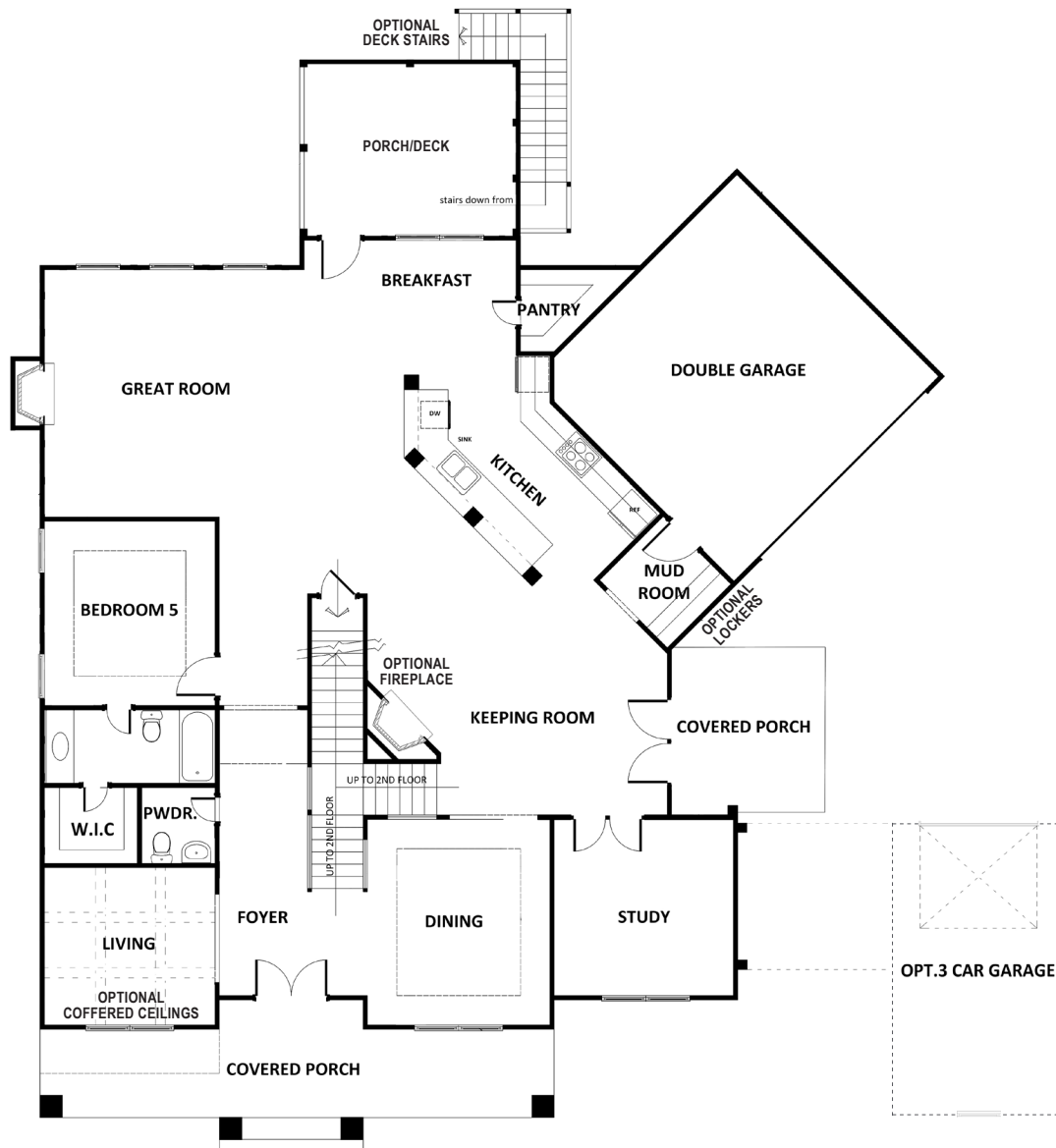
Prices, plans, elevations, square footage, specifications, materials, and included features are subject to change at any time without notice or obligation. Drawings, renderings, images, square footage, plans, elevations, features, colors and sizes are approximate and may vary from the actual homes built. © 2021 Tamra Wade Team of RE/MAX TRU (770) 502-6230. All rights reserved.

Revised 12-3-21

RE/MAX 
POWERED BY
TAMRA WADE

BARRINGTON

HERON BAY



FIRST FLOOR

WITH OPTIONAL BREEZEWAY

770-502-6230 | HeatherlandHomes.com



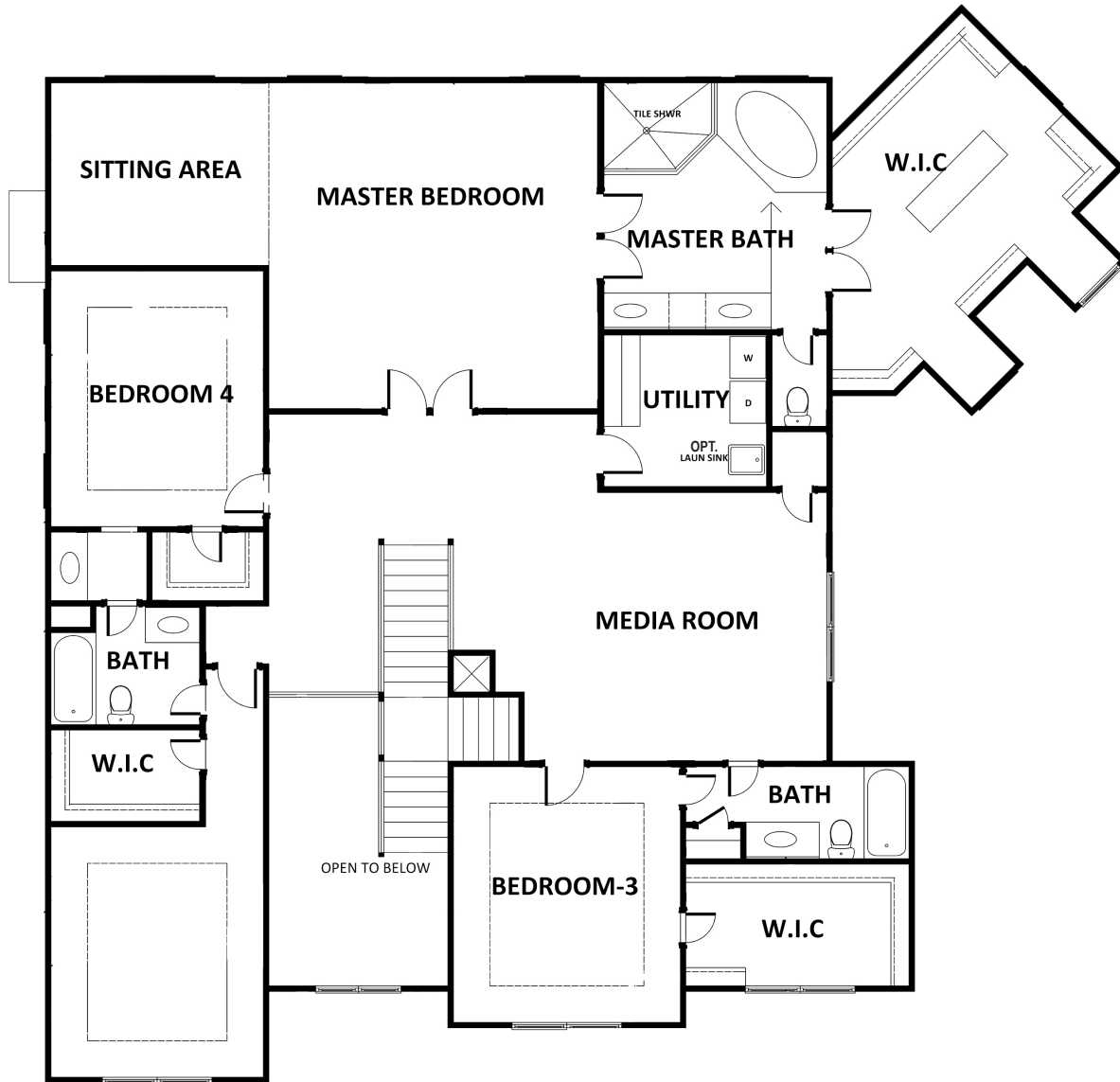
Prices, plans, elevations, square footage, specifications, materials, and included features are subject to change at any time without notice or obligation. Drawings, renderings, images, square footage, plans, elevations, features, colors and sizes are approximate and may vary from the actual homes built. © 2021 Tamra Wade Team of RE/MAX TRU (770) 502-6230. All rights reserved.

Revised 12-3-21

RE/MAX 
POWERED BY
TAMRA WADE

BARRINGTON

HERON BAY



SECOND FLOOR

770-502-6230 | HeatherlandHomes.com



Prices, plans, elevations, square footage, specifications, materials, and included features are subject to change at any time without notice or obligation. Drawings, renderings, images, square footage, plans, elevations, features, colors and sizes are approximate and may vary from the actual homes built. © 2021 Tamra Wade Team of RE/MAX TRU (770) 502-6230. All rights reserved.

Revised 12-3-21

RE/MAX 
— POWERED BY —
TAMRA WADE